

Quick Terrain Modeler

LiDAR Exploitation Software by Applied Imagery

Dear Quick Terrain Modeler User,

Thank you for your interest in Applied Imagery's Quick Terrain Modeler software. The process of obtaining a license file is outlined below. Please note that it is a multi-step process, but will require minimal time commitment on your part. To understand the process, we have provided a checklist and step-by-step instructions below.

Important: You will need your Quick Terrain Modeler WORKSTATION ID to activate your license. Instructions to find your Workstation ID are below. Email your WORKSTATION ID to info@appliedimagery.com to receive a license file.

Contact us if you have questions or need help: (301) 589-4446

Visit our website: <http://appliedimagery.com/>

Quick Terrain Modeler Trial License Checklist			
Step	Task	Estimated Time	Complete?
1	Choose Appropriate Version	1 second	
2	Fill Out Website Form	1 minute	
3	Download Software	1 minute	
4	Install Software & Find WORKSTATION ID	2 minutes	
5	Send QTM WORKSTATION ID to info@appliedimagery.com	30 seconds	
6	Receive Applied Imagery Email Containing License File	ASAP (Applied Imagery will respond as soon as possible. This process is not automated.)	
7	Run QT Modeler, Point to License File	10 seconds	
8	Quick Terrain Modeler Trial	2 weeks (Begins when key is issued)	

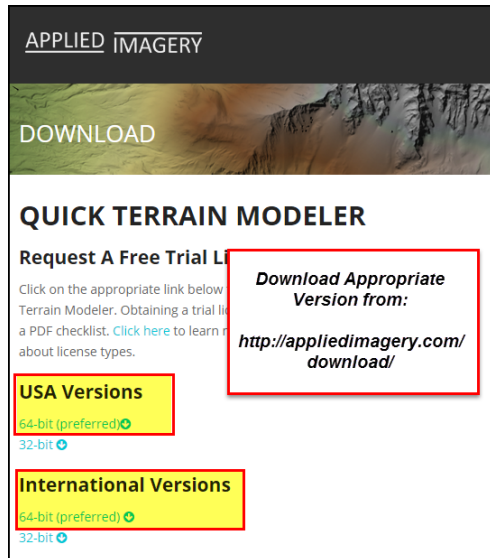
APPLIED IMAGERY

www.appliedimagery.com • info@appliedimagery.com • (301) 589-4446

Quick Terrain Modeler

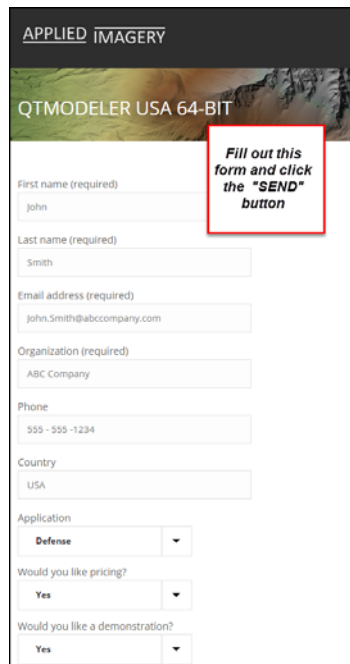
LiDAR Exploitation Software by Applied Imagery

Step 1: Visit Applied Imagery Website and Choose Appropriate Version (1 minute):



There are four Quick Terrain Modeler versions available on Applied Imagery's Quick Terrain Modeler Trial web page (<http://appliedimagery.com/download/>). Please note that due to export restrictions, users in the United States should download the USA version and users outside the United States should use the International version. Please download the 64-bit version unless you know for sure that you need the 32-bit version.

Step 2: Fill out Website Form (1 minute):



Fill out the online form to request your free trial license. Press the button to proceed to download.

Please note that, due to export restrictions, any generic email addresses (e.g., john@yahoo.com, jane@gmail.com) will need to be verified prior to issuing a temporary license.

Applied Imagery will send you an automated email acknowledgement with instructions to proceed.

Finally, please note that Applied Imagery will never sell or market your contact information to any third party for any reason.

APPLIED IMAGERY

www.appliedimagery.com • info@appliedimagery.com • (301) 589-4446

Quick Terrain Modeler

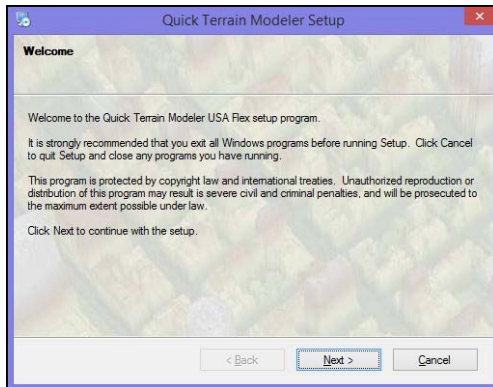
LiDAR Exploitation Software by Applied Imagery

Step 3: Download Quick Terrain Modeler (1 minute):

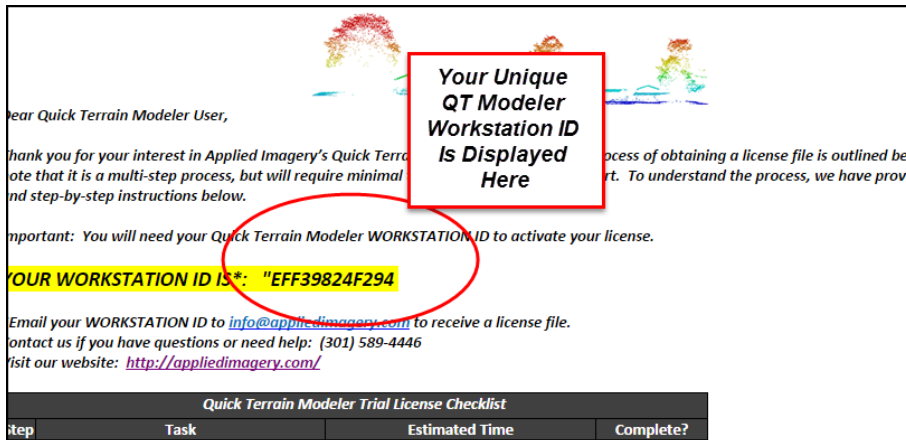
The download page will provide a link for Quick Terrain Modeler software. Click the link and the download should start. The file is approximately 250MB.



Step 4: Install Quick Terrain Modeler & Find Your Workstation ID



Once the download is complete, install Quick Terrain Modeler. It should only take a minute or two. An HTML document will pop up in your browser and it will display your Workstation ID. It will be 12 hexadecimal digits (e.g., 1A2B3C4D5F60 – but unique to your workstation). Applied Imagery needs the WORKSTATION ID to generate a license file.

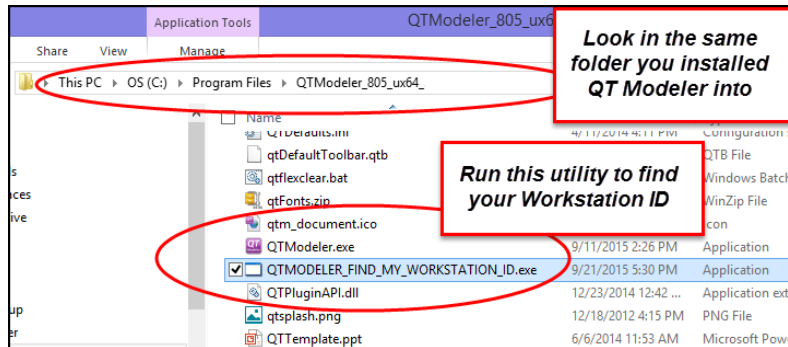


APPLIED IMAGERY

Quick Terrain Modeler

LiDAR Exploitation Software by Applied Imagery

NOTE: If the HTML file does not automatically pop up in your browser, please go to the Quick Terrain Modeler Installation folder (i.e., the folder into which you installed QT Modeler) and double click on the file called `QTMODELER_FIND_MY_WORKSTATION_ID.exe`. This should find your workstation ID and display in your web browser. If this still does not work, please contact Applied Imagery at info@appliedimagery.com or (301) 589-4446.



Step 5: Send Applied Imagery your WORKSTATION ID (1 minute):

Email the WORKSTATION ID to info@appliedimagery.com.

Step 6: Receive License File from Applied Imagery

Applied Imagery will reply to your email with a QT Modeler License File, which will be an attachment to the email. Copy the license file onto your workstation (i.e., the one that generated the unique WORKSTATION ID).

Step 7: Run Quick Terrain Modeler, Point to License File



Quick Terrain Modeler trial licenses last for two weeks.

Please contact us if you need help.

Again, thanks for your interest in Quick Terrain Modeler. If you need help during your trial, please contact us. For technical support, call (301) 589-4047 or email support@appliedimagery.com. We look forward to hearing from you.

- The Applied Imagery Team

APPLIED IMAGERY

www.appliedimagery.com • info@appliedimagery.com • (301) 589-4446